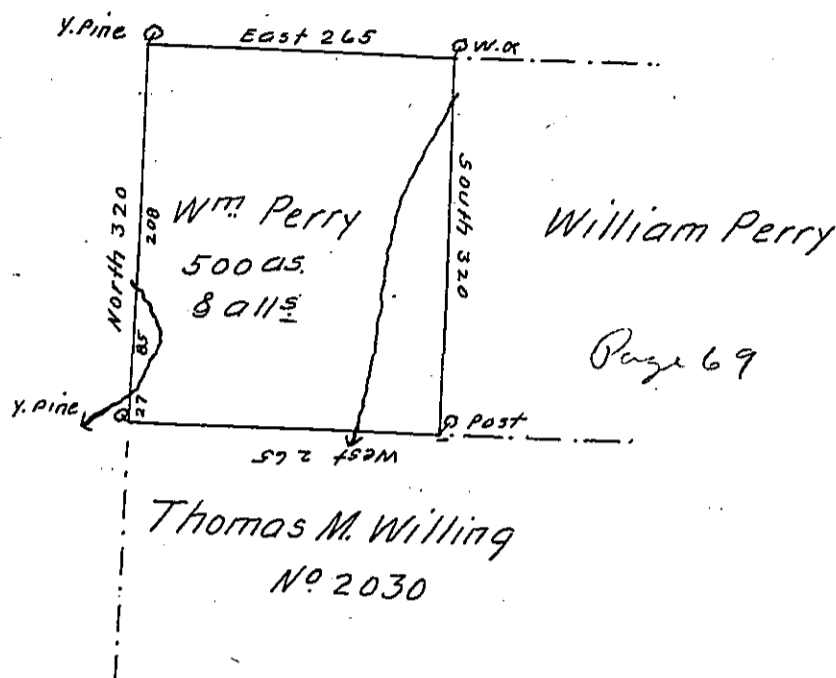


Vacant

Vacant



Page 69

Situate in Chapman Township County of Clinton (late Lycoming) on the East Side of Kettle Creek and bounded as above described. Surveyed to William Perry on the 16th day of August 1839 by Virtue of his Warrant for 500 Acres dated the 26th day of December 1838 Containing five hundred acres with allowance of Six per Cent for Roads &c.

To Jacob Sallade Esquire } Alexander H. McHenry D.S.
 Surveyor General } Michael Sour D.S. Clinton Co.

IN TESTIMONY that the above is a copy of the original remaining on file in the Department of Internal Affairs of Pennsylvania, made conformably to an Act of Assembly approved the 16th day of February, 1833, I have hereunto set my Hand and caused the Seal of said Department to be affixed at Harrisburg, this seventh day of May 1906.

George D. Brown
 Secretary of Internal Affairs.